













INSTRUCTION MANUAL

(TIDE GRAPHWATCH)

- | | |
|---|--|
|  Tide |  5 Alarms |
|  Moon Phase |  Chime |
|  Stopwatch |  World Time |
|  Countdown Timer |  Pacer |
|  100 years Calendar |  EL Backlight |
|  100m Water Resistant |  Battery(CR2025) |

BUTTONS

- Button operation are indicated using the letters shown in the illustration.



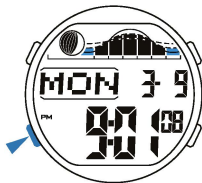
- A -- Reset/Stop
- B -- Mode
- C -- Light/-
- D -- Start/+

MODE SELECTION

- Press "B" to change the mode in the following sequence:
Timekeeping Mode → Stopwatch Mode → Countdown Timer Mode →
Alarm Mode → World Time Mode → Pacer Mode → Tide Setting Mode →
Tide Calculate Mode.

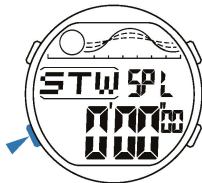
A. TIMEKEEPING

- 12/24H Format;
- Day of week, Month, Date, Hour, Minutes, Seconds;
- 100 years Calendar(2000 ~ 2099).



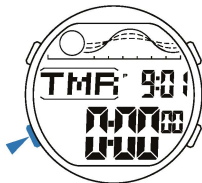
B. STOPWATCH

- 1/100 second unit;
- 8Laps, Splits;
- Measuring range: 0'00"00 ~ 99:59'59".



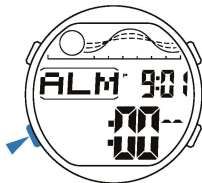
C. COUNTDOWN

- Countdown timer range: 99:59'59" ~ 0'00"00.



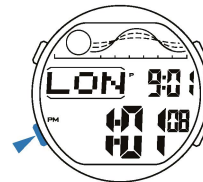
D. ALARM

- 5 Alarms;
- Chime.



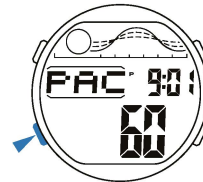
E. WORLD TIME

- The time for other time zone.



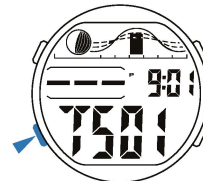
F. PACER

- 18 tempo(10 ~ 320).



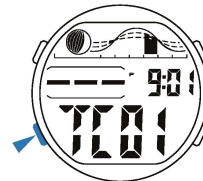
G. TIDE SETTING

- 20 tide address input.



H. TIDE CALCULATE

- Calculate the time of high tide and current moon age;
- Query the tide graph and moon phase of any time.



A. TIMEKEEPING

Current Tide Address and Calendar

- In the timekeeping mode, press and hold "D" to display: current tide address and calendar.

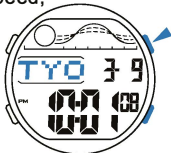


Time Setting

- In the timekeeping mode, press and hold "A" until the city code to flash (flashing indicated in setting mode);



- Press "C" or "D" to select the city code, press and hold to adjust at high speed;



- Press "B" change to the next selection;

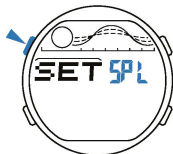


- Repeat step 2 & 3, the selection in the following sequence:
City code –
Daylight Saving Time –
Seconds – Hour – Minutes –
12/24H Format – Year – Month –
Date – M-D/D-M Format –
Key Tone(ON/OFF);
- Press "A" to exit the set state, after you set(The day of week is automatically displayed in accordance with year, month and date setting).

B. STOPWATCH

Stopwatch Type

- In the stopwatch mode, press and hold "A" until the SPL or LAP to flash(flashing indicated in setting mode);



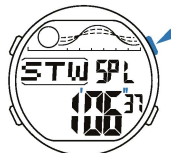
- Press "C" or "D" to select the SPL or LAP;



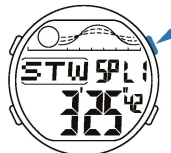
- Press "A" to exit the set state, after you set.

Split Time

- In the stopwatch mode, press "D" to start the stopwatch;



- To display the SPL time by pressing "D" again, auto change to running state after 2 seconds;



- Repeat step 2, you can measure the multi split time;



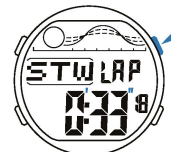
- Press "A" to stop the stopwatch;



- To reset the stopwatch by pressing "A" again.

Lap Time

- In the Lap state, press "D" to start the stopwatch;



- To display the lap time by pressing "D" again, auto change to running state after 2 seconds;



- Repeat step 2, you can measure the multi Lap time;



- Press "A" to stop the stopwatch;



- To reset the stopwatch by pressing "A" again.

Recall

1. In the stopwatch mode, press "C" to display the time of first Split when the stopwatch have multi split time;



2. Press "D" to forward browse the SPL1~SPL8 time;



3. Press "C" to backward browse the SPL8~SPL1 time;



4. Press "A" or "B" to return to stopwatch mode.

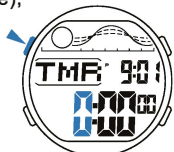
- The maximum stopwatch record is 8.
- The way to browse SPL and LAP is the same.
- When change the type of stopwatch, all the data will auto clear.

C. COUNTDOWN

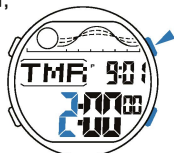
- When the countdown timer reaches zero, the alarm sounds for about 60 seconds and press any button to break it.

Countdown Timer Setting

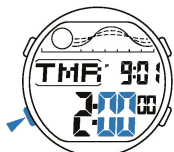
1. In the countdown mode, press and hold "A" until the hour to flash (flashing indicated in setting mode);



2. Press "D" to increase the hour, press "C" to decrease the hour, press and hold to adjust at high speed;



3. Press "B" to select the next selection;



4. Repeat step 2 & 3, the selection in the following sequence: Hour - Minutes - Seconds;

5. Press "A" to exit the set state, after you set.

Use Countdown Timer

1. Press "D" to start the countdown timer;

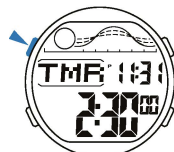


2. To pause by pressing "D" again.



A beep sound when the timer countdown to 60, 50, 40, 30, 20, 10, 5, 4, 3, 2, 1seconds for the countdown timer.

When the countdown timer stop, Press "A" return to the last set value.



D. ALARM

- The alarm sounds at the preset time each day for about 60 seconds, press any button to break it.

Chime And Alarm

- In the alarm mode, press "C" to select chime, alarm1~alarm5.



- In the alarm1~alarm5 state, press "D" to on/off the alarm.

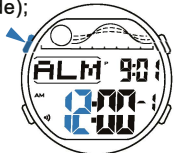


- In the chime state, press "D" to on/off the chime.



Alarm1 Setting

1. In the alarm1 state, press and hold "A" until the hour to flash, the indicator "A" appear (flashing indicated in setting mode);



2. Press "D" to increase the hour, press "C" to decrease the hour, press and hold to adjust at high speed;



3. Press "B" to select the minutes;



4. Press "D" to increase the minutes, Press "C" to decrease the minutes, press and hold to adjust at high speed;



5. Press "A" to exit the set state, after you set.
- The way to set alarm1 ~ alarm5 is the same.

E. WORLD TIME

1. In the world time mode, press "D" to forward select the time zone, press "C" to backward select the time zone, press and hold to adjust at high speed;



2. In the world time mode, press and hold "A" to ON/OFF the Daylight Saving Time.



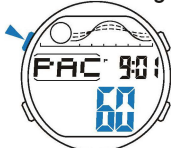
City Code Table

City code	City	GMT Differential	Other major cities in same time zone
CXI	Kiritimati	+14	Kiritimati
TBU	Nukualofa	+13	Nukualofa
CHT	Chatham Islands	+12.75	Chatham Islands
WLG	Wellington	+12	Suva, Christchurch, Nauru Island, Nadi
NOU	Noumea	+11	Port Vila
SYD	Sydney	+10	Guam, Vladivostok
ADL	Adelaide	+9.5	Darwin
TYO	Tokyo	+09	Seoul, Pyongyang
HKG	Hong Kong	+08	Singapore, Kuala Lumpur, Beijing, Taipei, Manila
BKK	Bangkok	+07	Jakarta, Phnom Penh, Hanoi, Vientiane
RGN	Yangon	+6.5	Yangon
DAC	Dhaka	+06	Novosibirsk, Colombo
KTM	Kathmandu	+5.75	Kathmandu
DEL	Delhi	+5.5	Mumbai, Kolkata, Colombo
KHI	Karachi	+05	Male
KBL	Kabul	+4.5	Kabul
DXB	Dubai	+04	Abu Dhabi, Muscat
THR	Tehran	+3.5	Shiraz
JED	Jeddah	+03	Moscow, Addis Ababa, Aden
CAI	Cairo	+02	Cape Town, Sofia, Athens, Helsinki, Istanbul
PAR	Paris	+01	Milan, Rome, Amsterdam, Madrid, Algiers
LON	London	+00	(UTC), Lisbon, Casablanca, Reykjavik
RAI	Praia	-01	Praia
FEN	Fernando de Noronha	-02	Fernando de Noronha
RIO	Rio de Janeiro	-03	Buenos Aires, Montevideo
YYT	St John's	-3.5	St John's
SCL	Santiago	-04	La Paz, Port Of Spain
CCS	Caracas	-4.5	Caracas
NYC	New York	-05	Montreal, Detroit, Miami, Boston, Panama City
CHI	Chicago	-06	Houston, Dallas/Fort Worth, New Orleans
DEN	Denver	-07	Phoenix, Edmonton, Chihuahua
LAX	Los Angeles	-08	San Francisco, Las Vegas, Vancouver, Seattle
ANC	Anchorage	-09	Nome
HNL	Honolulu	-10	Papeete
PPG	Pago Pago	-11	Pago Pago

F. PACER

Pacer Setting

1. In the pacer mode, press and hold "A" until the tempo number to flash (flashing indicated in setting mode);



2. Press "C" or "D" select the tempo in the following sequence:
10 → 20 → 30 → 40 → 50 → 60 → 70 → 80 → 90 → 100 → 120 → 140 → 160 → 180 → 200 → 240 → 280 → 320;



3. Press "A" to exit the set state, after you set.

Use The Pacer

1. Press "D" to start;



2. To stop it by pressing "D" again.



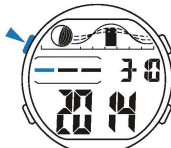
G. TIDE SETTING

Tide address setting and historical time of high tide

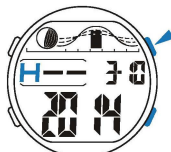
- You can get the historical high tide data by the way below: Refer to local observatory weather forecast website which also provides local tide information.

Input the high tide data you queried (year, month, date, hour, minute) into watch by the ways below :

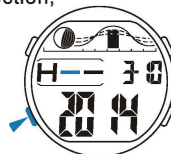
1. In the tide setting mode. Press "A" the 1st of tide address flash (flashing indicated in setting mode);



2. Press "C" or "D" to adjust character, press and hold to adjust at high speed;



3. Press "B" change to the next selection;



4. Repeat step 2 & 3, the selection in the following sequence:
Tide address (Max: 10 digit) → Year → Month → Date → Hour → Minutes → Northerly → Southerly;
5. Press "A" to exit the set state, after you set.

- Press "C" can set the next tide address and historical time of high tide.



- 20 tide address (TS01-TS20) and historical time of high tide, Each set in the same way.

- Northerly ("N↖E"): Moon is north of you.
- Southerly ("N↗E"): Moon is south of you.
- Setting range of year, month, date (historical time of high tide): within one year at present time (other time can not be set).

Query tide address and historical time of high tide

- Before query the data, please select the tide address you want to query first (TS01-TS20).

1. In the tide setting mode. Press "D" query the tide address and year, month, date;



2. To query hour and minute by pressing "D" again.



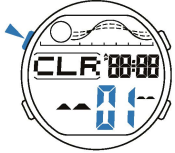
- Press "C" can query the next set of tide data, Each set query in the same way.



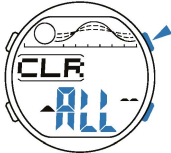
H. TIDE CALCULATE

Delete Tide Data

1. In the tide setting mode, press and hold "A" until the record number to flash;



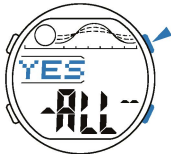
2. Press "C" or "D" to select delete current record or delete all;



3. Press "B" to confirm the deletion objects;



4. Press "C" or "D" to select "YES";

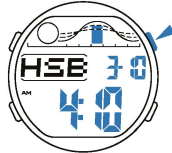


5. Press "B" to delete and return tide setting mode.

Time of next high tide and current moon age

- The Time of next high tide is calculated by current time and the time of historical high tide you input under tide setting mode.
- Before query the data, please select the tide address you want to query first(TC01-TC20).

1. In the tide calculate mode, press "D" Query the time of next high tide and date;



2. To query current moon age by pressing "D" again.



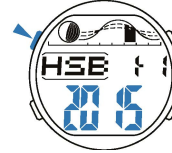
- Press "C" can query the next set of tide data, Each set query in the same way.



Query tide graph and moon phase of any time

- Perform below operation, you can query the tide graph and moon phase of any time.

1. In the tide calculate mode, press "A" the year to flash;



2. Press "D" to increase the hour, press "C" to decrease the hour, press and hold to adjust at high speed;



3. Press "B" change to the next selection;



4. Repeat step 2 & 3, the selection in the following sequence:
Tide site name(Max: 10 digit)
Year - Month - Date - Hour - Minutes;

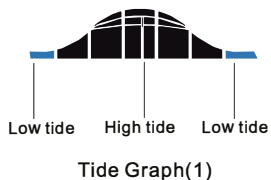
5. Press "A" to exit the set state.

During setting, the tide graph and moon phase will change with time setting.

MOON PHASE

In the tide setting mode:
the moon phase graph to display is the moon phase of the historical time of high tide entered by user.

In the tide calculate mode:
a. not into calculate state, the moon phase graph TC01-TC20 display is the current time moon phase.
b. Short press "A" enter into calculate state then display moon phase of the calculated date, after withdraw from calculate state, still display current time moon's phase of current time.



Tide Name	Graph	Description
Spring Tide		Occurs a few days before and after a new moon and full moon.
Intermediate Tide		Except spring tide and neap tide, other days are moderate tide.
Neap Tide		Occurs a few days before and after the waxing and waning of a half moon.

Tide Graph(2)

Part you can't see Moon Phase (Part you can see)

Moon Phase Indicator								
Moon Age	(29-1)	(2-3)	(3-5)	(5-7)	(7-9)	(9-11)	(11-13)	(13-14)
Moon Phase	New Moon				Waxing			

Moon Phase Graph(1)

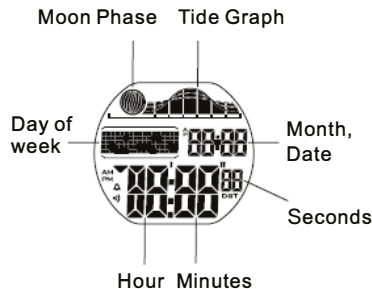
Moon Phase (Part you can see) Part you can't see

Moon Phase Indicator								
Moon Age	(14-16)	(16-18)	(18-20)	(20-22)	(22-24)	(24-25)	(25-27)	(27-28)
Moon Phase	Full Moon				Waning			

Moon Phase Graph(2)

DISPLAY

- The screen shown in below:

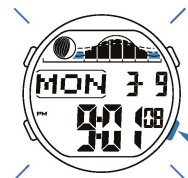


BACK LIGHT

The backlight that uses an EL (electro-luminescent) cause the display to glow for easy reading in the dark.

Use EL Backlight

In the timekeeping mode, press "C" to illuminate the display about 3 seconds.



ATTENTION

- Never try to open the case or remove its back cover.
- Do not operate buttons underwater.
- Should moisture appear inside the watch, have it checked immediately by your dealer. Otherwise it can cause erosion of the metal parts of the watch.
- Though the watch is designed to withstand normal use, you should avoid rough use or dropping the watch.
- Avoid exposing the watch to temperature extremes.
- Wipe the watch with dry, soft cloth only. Avoid allowing it to come into direct contact with chemical materials, which can cause deterioration of the plastic parts of the watch.
- Avoid to wear the watch in electromagnetic, static conditions.

